

Glow.worm



The **Ultracom** Range

of high efficiency condensing boilers

Glow-worm

OFFERING YOU A FULL SYSTEM SOLUTION



With over 75 years of experience in providing UK homes with value for money heating and hot water solutions, Glow-worm has built a reputation on providing straightforward and reliable systems you can depend on.

Today, our heating systems cover not just domestic gas boilers, but renewable technologies, domestic controls and hot water cylinders.

We hope this brochure gives you all the information needed to help you take the next stage in selecting your new Glow-worm heating and hot water system. Should you wish to discuss any area in more detail or if you need any further information, please contact us to see how we can help.

Based on 4th generation tried and tested technology, the Ultracom high efficiency condensing boiler is Glow-worm's most technically advanced range of appliances yet. Combining product performance with exceptional reliability, the Ultracom range is both quick to install and easy to use.

SEDBUK A rated and available as a Combi, Open Vent or System boiler in a wide variety of outputs, the Ultracom benefits from a stainless steel heat exchanger, pull down wiring connections and a low NOx class 5 rating making it kinder to the environment.

With multiple flueing options and zero compartment ventilation, the Ultracom can be installed almost anywhere making it great for both replacement and new build installations alike.

If it's the complete system you're looking for then Glow-worm has the answer with a wide range of single and twin coil stainless steel hot water cylinders, siting and flueing problem solving accessories, intelligent room controls and renewable solutions; all designed to make life as simple as possible.

Supported by a two year parts and labour warranty, the Ultracom is the performance range of boilers from the experienced manufacturer you trust.

Contents

ULTRACOM RANGE



Contents

Ultracom Range:

Ultracom cxi Combination Boilers	4-5
Ultracom cx Combination Boilers	6-7
Ultracom hxi Open Vent Boilers	8-9
Ultracom sxi System Boilers	10-11

Control Options	12-13
-----------------	-------

Cylinders Single & Twin Coil	14
------------------------------	----

Accessories	15
-------------	----

Flueing Options:

Top Rear	16
Top Side	17
Vertical	18
Plume Management Kit	19
Twin	20-21

Control Options Matrix	22
------------------------	----

Product Specifications:

Ultracom cxi	23
Ultracom cx	23
Ultracom hxi	24
Ultracom sxi	24
Cylinders: Single Coil	25
Cylinders: Twin Coil (as part of a Clearly Solar System)	25

After Sales

Market leading customer care	26
Our training courses	27



The Ultracom cxi is Glow-worm's advanced range of high efficiency condensing combination boilers. Based on 4th generation technology the Ultracom cxi is built with tried and tested components providing you with proven reliability, exceptional efficiency and ease of installation.

Recommended by the Energy Saving Trust, the Ultracom cxi is SEDBUK A rated with a NOx class 5 rating, (the best possible) and has an 'Eco' setting which provides a further level of energy saving making the most of every pound spent on their gas bill and preserving the environment.

Available in 24kW, 30kW and 38kW models and suitable for LPG applications without the need for a conversion kit, the Ultracom cxi is a top performing combi with domestic hot water flow rates up to 15.5l/min and a 5-second* hot water response. The stylish inbuilt back-lit digital controls provide 7 day or 24-hour, single or two channel control for the central heating and hot water pre-heat function. The simple push

button controls mean that it takes seconds to set and alter any programmes, providing the homeowner with as much or as little flexibility as they need.

The onboard diagnostics provide superior serviceability whilst drop down wiring connections, extensive flueing options and an inbuilt bypass & filling loop make the Ultracom cxi quick and easy to install.

For advanced system efficiencies and greater control, the Ultracom cxi benefits from room and weather compensation when used with Glow-worm's external controls.

*Measured at a tap 1m from the boiler



Controls

For full information on Glow-worm controls turn to page 12



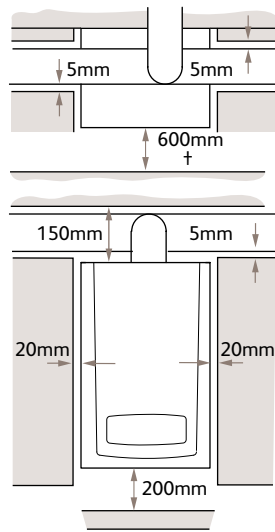
Features

- SEDBUK A ●
- 5 second hot water delivery (measured at a top 1m from the boiler) ●
- Advanced diagnostics ●
- NOx class 5 ●
- Inbuilt frost protection ●
- LPG compatible ●
- Drop down electrical connections ●
- Inbuilt programmer ●
- Upward piping kit (optional) ●
- Pre-fixing jig (optional) ●
- Digital display ●
- Timed pre-heat ●
- Bottom cover plate ●
- High modulation ●
- Outdoor sensor (optional) ●
- Anti-theft kit (optional) ●
- Manometer kit (optional) ●

Max. flue lengths

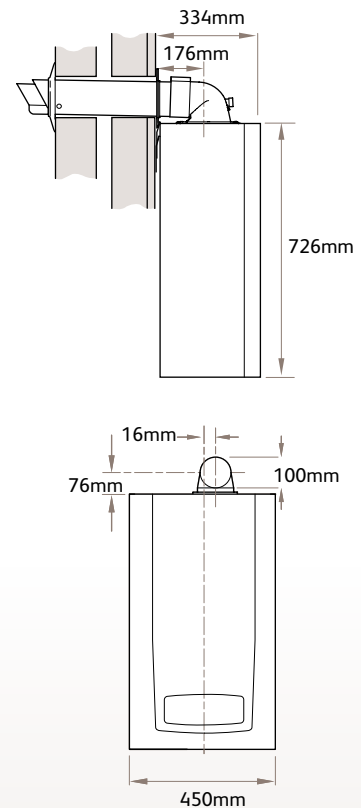
Horizontal	10m
Vertical	10m
Twin	40m

Min. clearances (mm)



† A removable compartment door can be placed at least 5mm in front of the appliance

Dimensions (mm)



Control options

	Ultracom cxi	Climastat	Climapro / Climapro RF	Outdoor Sensor
To achieve room compensation you will need:				
• Using inbuilt programmer	✓	+	✓	x
or				
• Using external controls	✓	+	x	✓
To achieve weather compensation you will need:				
• Using inbuilt programmer	✓	+	✓	+
or				
• Using external controls	✓	+	x	✓
To achieve basic on/off control you will need:				
• Using inbuilt programmer	✓	+	✓	x
or				
• Using external controls	✓	+	x	✓

Note: Satisfies Part L requirements for time and temperature control when used in the above configurations

Glow-worm has a range of intelligent controls designed to work with the Ultracom cxi. The table above shows the various control options available. You will need all the items marked ✓ to achieve the level of control required. For more detailed information see page 12.



The Ultracom cx is Glow-worm's advanced range of high efficiency condensing combination boilers. Based on 4th generation technology the Ultracom cx is built with tried and tested components providing you with proven reliability, exceptional efficiency and ease of installation.

Designed for the customer that prefers a mechanical timer, the Ultracom cx is compatible with an easy to use inbuilt analogue timer to provide simple 24 hour heating control (available as an accessory).

Recommended by the Energy Saving Trust, the Ultracom cx is SEDBUK A rated with a NOx class 5 rating (the best possible), and has an 'Eco' setting which provides a further level of energy saving making the most of every pound your customer spends on their gas bill and preserving the environment.

Available in 24kW and 30kW models and suitable for LPG applications without the need for a conversion kit, the Ultracom cx is a top performing combi with domestic hot water flow rates up to 12.3/min and a 5-second* hot water response.

The onboard diagnostics provide superior serviceability whilst drop down wiring connections, extensive flueing options, an inbuilt bypass and filling loop make the Ultracom cx quick and easy to install.

For advanced system efficiencies and greater control, the Ultracom cx benefits from room and weather compensation when used with Glow-worm's external controls.

*Measured at a tap 1m from the boiler



Controls

For full information on Glow-worm controls turn to page 12



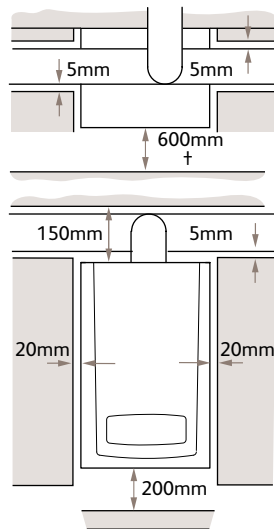
Features

- SEDBUK A ●
- 5 second hot water delivery (measured at a tap 1m from the boiler) ●
- Advanced diagnostics ●
- NOx class 5 ●
- Inbuilt frost protection ●
- LPG compatible ●
- Drop down electrical connections ●
- Upward piping kit (optional) ●
- Pre-fixing jig (optional) ●
- 2 digit LCD ●
- Timed pre-heat ●
- Bottom cover plate ●
- High modulation ●
- Outdoor sensor (optional) ●
- Anti-theft kit (optional) ●
- Manometer kit (optional) ●
- Analogue timer kit (optional) ●

Max. flue lengths

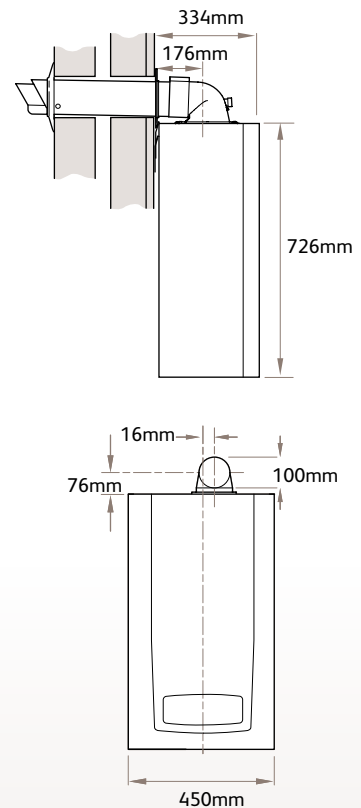
Horizontal	10m
Vertical	10m
Twin	40m

Min. clearances (mm)



† A removable compartment door can be placed at least 5mm in front of the appliance

Dimensions (mm)



Control options

	Ultracom cx	Climastat	Climapro / Climapro RF	Analogue Timer	Outdoor Sensor
To achieve room compensation you will need:					
• Using external controls	✓	+	x	✓	x
To achieve weather compensation you will need:					
• Using external controls	✓	+	x	✓	+
or					
• Using analogue timer	✓	+	✓	+	✓
To achieve basic on/off control you will need:					
• Using external controls	✓	+	x	✓	x
or					
• Using analogue timer	✓	+	✓	+	x

Note: Satisfies Part L requirements for time and temperature control when used in the above configurations

Glow-worm has a range of intelligent controls designed to work with the Ultracom cx. The table above shows the various control options available. You will need all the items marked ✓ to achieve the level of control required. For more detailed information see page 12.



The Ultracom hxi is Glow-worm's advanced range of high efficiency condensing open vent boilers. Based on 4th generation technology the Ultracom hxi is built with tried and tested components providing you with proven reliability exceptional efficiency and ease of installation. Easy to use inbuilt digital controls provide advanced home comfort.

Recommended by the Energy Saving Trust, the Ultracom hxi is SEDBUK A rated with a NOx class 5 rating, (the best possible) making the most of every pound your customer spends on their gas bill and preserving the environment.

Available in 12kW, 15kW, 18kW, 24kW, 30kW or 38kW models and suitable for LPG applications without the need for a conversion kit, the Ultracom hxi provides excellent heating performance with the stainless steel coiled tube heat exchanger. For advanced reliability the Ultracom hxi features onboard diagnostics which provide superior serviceability while Glow-worm's unique 'Continua'© electronics allow the

Ultracom hxi to continue where others may fail due to system faults.

The stylish, orange backlit controls provide 7 day or 24hr, 2 channel control for both central heating and hot water. Simple push button controls and cut and paste functionality mean that it takes seconds to set and alter any programmes, providing the homeowner with as much flexibility as they need. For simple on/off control the Ultracom hxi should be installed with the options board. For intelligent room control or weather compensation, install the Ultracom hxi with a Smart Wiring Centre, providing advanced system efficiencies and greater control.



Controls & Cylinders



For full information on Glow-worm:
Controls turn to page 12
Cylinders turn to page 14



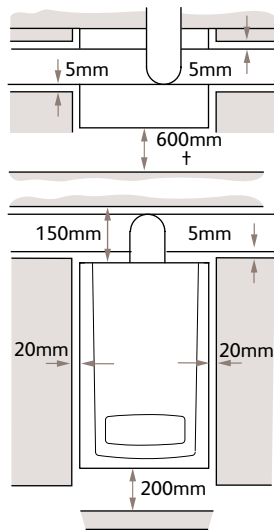
Features

- SEDBUG A ●
- Advanced diagnostics ●
- NOx class 5 ●
- Inbuilt frost protection ●
- LPG compatible ●
- Drop down electrical connections ●
- Inbuilt programmer (Requires Smart Wiring Centre) ●
- Digital display ●
- Bottom cover plate ●
- High modulation ●
- Outdoor sensor (Requires Smart Wiring Centre) ●
- Anti-theft kit (optional) ●
- Manometer kit (optional) ●

Max. flue lengths

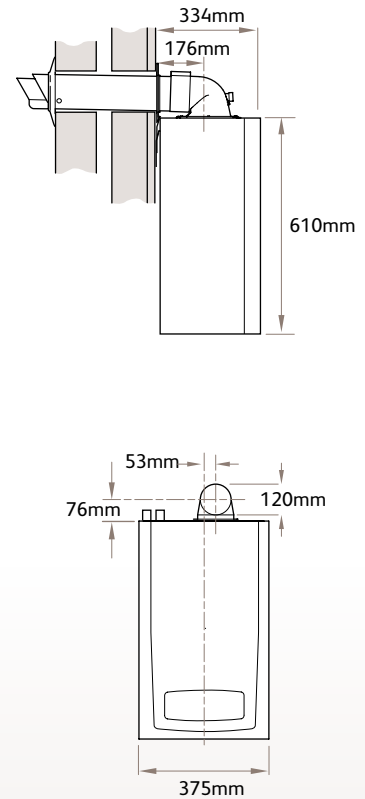
- Horizontal 10m
- Vertical 10m
- Twin 40m

Min. clearances (mm)



† A removable compartment door can be placed at least 5mm in front of the appliance

Dimensions (mm)



Control options

	Ultracom hxi	Climastat	Climapro / Climapro RF	Smart Wiring Centre	Options board	Outdoor Sensor
To achieve room compensation you will need:						
• Using inbuilt programmer	✓	+	✓	+	×	×
or						
• Using external controls	✓	+	×	✓	+	✓
To achieve weather compensation you will need:						
• Using inbuilt programmer	✓	+	✓	+	×	✓
or						
• Using external controls	✓	+	×	✓	+	✓
To achieve basic on/off control you will need:						
• Using inbuilt programmer	✓	+	✓	+	×	×
or						
• Using external controls	✓	+	×	✓	+	×

Note: Satisfies Part L requirements for time and temperature control when used in the above configurations

Glow-worm has a range of intelligent controls designed to work with the Ultracom hxi. The table above shows the various control options available. You will need all the items marked ✓ to achieve the level of control required. For more detailed information see page 12.



The Ultracom sxi is Glow-worm's advanced range of high efficiency condensing sealed system boilers. Based on 4th generation technology the Ultracom sxi is built with tried and tested components providing you with proven reliability, exceptional efficiency and ease of installation. Whilst easy to use inbuilt digital controls provide advanced home comfort.

Recommended by the Energy Saving Trust, the Ultracom sxi is SEDBUK A rated with a NOx class 5 rating, (the best possible) making the most of every pound your customer spends on their gas bill and preserving the environment.

Available in 18kW and 30kW models and suitable for LPG applications without the need for a conversion kit, the Ultracom sxi provides excellent heating performance through a stainless steel heat exchanger. Whilst drop down wiring connections, extensive flueing options and optional pre-fixing jig makes the Ultracom sxi really easy to install.

The onboard diagnostics provide superior serviceability and Glow-worm's unique 'Continua'© electronics allow the Ultracom sxi to continue where others may fail due to system faults.

The stylish, orange backlit controls provide 7 day or 24hr, 2 channel control for both central heating and hot water. Simple push button controls and cut and paste functionality mean that it takes seconds to set and alter any programmes, providing the homeowner with as much flexibility as they need. For simple on/off control the Ultracom sxi should be installed with the options board. For intelligent room control or weather compensation, install the Ultracom sxi with a Smart Wiring Centre, providing advanced system efficiencies and greater control.

*Measured at a tap 1m from the boiler



Controls & Cylinders



For full information on Glow-worm:
Controls turn to page 12
Cylinders turn to page 14



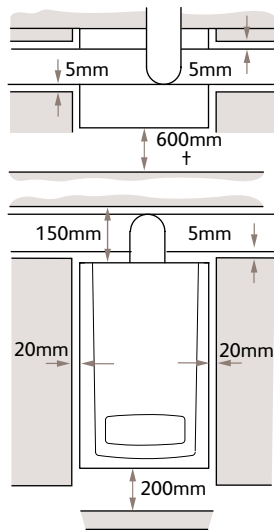
Features

- SEDBUK A ●
- Advanced diagnostics ●
- NOx class 5 ●
- Inbuilt frost protection ●
- LPG compatible ●
- Drop down electrical connections ●
- Upward piping kit (optional) ●
- Pre-fixing jig (optional) ●
- Inbuilt programmer (Requires Smart Wiring Centre) ●
- Digital display ●
- Bottom cover plate ●
- High modulation ●
- Outdoor sensor (Requires Smart Wiring Centre) ●
- Anti-theft kit (optional) ●
- Manometer kit (optional) ●

Max. flue lengths

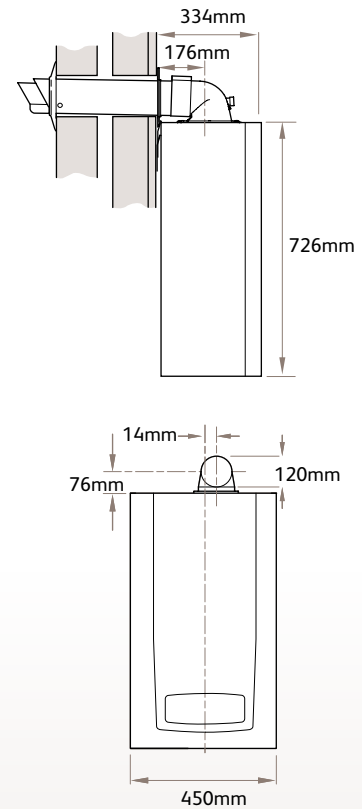
Horizontal	10m
Vertical	10m
Twin	40m

Min. clearances (mm)



† A removable compartment door can be placed at least 5mm in front of the appliance

Dimensions (mm)



Control options

	Ultracom sxi	Climastat	Climapro / Climapro RF	Smart Wiring Centre	Options board	Outdoor Sensor
To achieve room compensation you will need:						
• Using inbuilt programmer	✓	+	✓	+	×	×
or						
• Using external controls	✓	+	×	✓	+	✓
To achieve weather compensation you will need:						
• Using inbuilt programmer	✓	+	✓	+	×	✓
or						
• Using external controls	✓	+	×	✓	+	✓
To achieve basic on/off control you will need:						
• Using inbuilt programmer	✓	+	✓	+	×	×
or						
• Using external controls	✓	+	×	✓	+	×

Note: Satisfies Part L requirements for time and temperature control when used in the above configurations

Glow-worm has a range of intelligent controls designed to work with the Ultracom sxi. The table above shows the various control options available. You will need all the items marked ✓ to achieve the level of control required. For more detailed information see page 12.



Glow-worm believes that when it comes to heating the home efficiently, choosing the right controls is almost as important as choosing the right boiler. Not only will the right control keep the home at the right temperature, but will also help to save money and conserve the environment through preventing unnecessary boiler activity.

Glow-worm's range of intelligent controls are specifically designed to work with Glow-worm appliances creating highly efficient heating systems and greater home comfort. The Climastat, Climapro and Climapro RF are fully compatible for use with the Ultracom cxi, cx, hxi and sxi.

The Climastat is a room thermostat which controls temperature and the Climapro and Climapro RF are programmable room thermostats which have two channels enabling your customer to have timed hot water and central heating.

The Climapro RF has exactly the same functionality as the Climapro, except it talks to the Ultracom using radio frequency (RF) technology.

Intelligent Room Control Explained

Intelligent room control is a simple method of controlling the flow temperature of water to the central heating system based on the temperature measured in the room. As the temperature in the room approaches the desired set point, the Climastat or Climapro/RF begins to lower the flow temperature of water

supplied to the central heating system (radiators). A lower flow temperature means that the boiler operates more efficiently in, or closer to the condensing mode. Energy costs are then reduced and a more stable and comfortable room temperature is achieved.

Weather Compensation Explained

Weather compensation measures the temperature outside the property and adjusts the flow temperature to the radiators accordingly. The colder the outdoor temperature, the hotter the flow temperature, and conversely the warmer the outdoor temperature the cooler the flow temperature will be. The effect is that the flow temperature adjusts the output of the radiators to meet the actual heat demand of the property. The lower flow temperature also ensures that the boiler operates more efficiently.

Smart Wiring Centre

This intelligent functionality can be achieved on the Ultracom hxi and sxi with Glow-worm controls by installing a Smart Wiring Centre available from Glow-worm as an accessory.

When the Climastat and Climapro/RF are used for room (load) or weather compensators, an additional 2% points can be added to the boilers SEDBUK value as used in the Code for Sustainable Homes.

The Glow-worm range of controls can be combined with the complete Ultracom range to achieve room compensation, weather compensation or simple on/off functionality. See page 22 for full details.



Climastat

Room thermostat - temperature only

- Extra low voltage
- Simple & discreet 2 wire connection
- Polarity not important
- Easy to use



Climapro

Room thermostat - programmable room thermostat time and temperature

- 2 channel controller for central heating and hot water
- Provides 24 hour or 7 day timed programme options
- Extra low voltage
- Simple & discreet 2 wire connection
- Polarity not important
- Easy to use



Climapro RF

Room thermostat - wireless programmable room thermostat time and temperature

- Wireless
- Works with RF receiver connected to the boiler
- 2 channel controller for central heating and hot water
- Provides 24 hour or 7 day timed programme options
- Extra low voltage
- Polarity not important
- Easy to use



Cylinders

SINGLE AND TWIN COIL



Single coil cylinders

Manufactured from high grade stainless steel with laser welded seams, Glow-worm cylinders are extremely reliable, hard wearing and come complete with a 25 year warranty against perforation of the steel shell. Built with efficiency and performance in mind, our cylinders incorporate excellent insulation that achieves heat loss as low as 1.7kWh/24hrs and a high recovery heating coil that reheats the cylinder in as little as 20 minutes*.

Available in six sizes 115, 150, 175, 200, 250 and 300 litres, Glow-worm cylinders are suitable for all sizes of property from small single bathroom apartments up to a larger three bedroom property with en-suite shower room.

Twin coil cylinders

Unvented, stainless steel and narrow enough to fit through any standard airing cupboard door, the Glow-worm twin coil cylinder is the perfect choice for the home which is considering solar thermal now or in the future. Fully compatible with any open vent or sealed system boiler, the Twin coil cylinder performs in the same way as a single coil cylinder but with the added flexibility of being solar ready.

Special construction of the coils inside the cylinder ensures that the top 2/3 of the cylinder is heated first enabling high volumes of hot water to be delivered on demand.

In situations when the twin coil cylinder is installed with a Glow-worm Clearly Solar system, the cylinder benefits from a thermostatic mixing valve which mixes cold water into the solar heated water to achieve the required temperature for safe water usage.

For more information on Clearly Solar, please visit: www.glow-worm.co.uk

Main features

- High grade stainless steel cylinder with laser welded seams
- Single coil available in 115, 150, 175, 200, 250 & 300 litres
- Twin coil available in 200, 250 & 300 litres
- Insulation meets CheSS best practice as low as 1.7kWh/24hrs (single coil cylinder) *
- High recovery heating coil - just 20 minutes
- External expansion vessel (supplied)
- Covered controls and wiring box
- Simple maintenance - no anode required
- High flow rates achievable working at 3.5bar pressure
- 25 year warranty in cylinder shell

* Attainable with the 115 Litre model

Accessories

PLUME & CONDENSATE SOLUTIONS

Plume Management Kit

To resolve the problems that plume can cause when a condensing boiler is running, Glow-worm has created the Plume Management Kit; a clever accessory which allows the plume to be exhausted further away from the duct, reducing the visual impact of the vapour trail.

The simple piping kit fits neatly onto the horizontal flue of any Glow-worm high efficiency boiler and can be extended up to a maximum of 6m* in length, fitting easily round ledges and other obstacles to achieve minimum clearance levels required on installations.

* Maximum flue lengths must not be exceeded

Kit features

- Compatible with all Glow-worm high efficiency boilers
- Can be retro-fitted to any existing Glow-worm Ultracom installation
- Additional elbows, bends and 1-metre extensions available
- Simple push-fit connection
- Available in black or white to match rain water fittings

Plume Deflector Kit

Compatible with all Glow-worm high efficiency boilers, the Plume Deflector Kit is a useful accessory designed to take the hassle out of flue gas termination by diverting plume left, right or upwards away from problem zones such as adjacent properties or walk ways. Available in black or white, the Plume Deflector Kit can be installed quickly and simply onto a horizontal flue instead of the standard terminal end piece during or after installation.



Condensate Pump

To remove the problems associated in locating a suitable outlet to draining away waste from the condensing boiler, Glow-worm have produced a condensate pump that can collect the condensate from the boiler and pump it back into the waste system aiding a more flexible installation.



Glow-worm's Condensate Pump is the smallest available in the UK and operates at maximum efficiency with the reservoir



Glow-worm Plume Management kit

pump discharging the condensate in one go when the fill level is reached, rather than as a continuous operation.

The Condensate Pump is extremely reliable; in the unlikely event of it becoming too full, the overflow safety switch will automatically shut the connected boiler down and the pump's LED display will flash red indicating a fault ensuring the pump is completely safe to use and will display a fault code on the boiler.

Pump features

- One of the smallest condensate pumps in the UK
- Compatible with all Glow-worm Ultracom models
- Vertical pump height up to 4m
- 6m discharge hose for connecting the pump to the waste water system
- Over flow safety switch

Ridge Tile Terminal

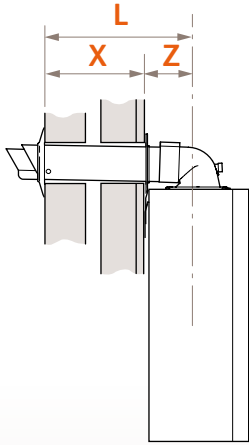
Designed for use on all Glow-worm high efficiency boilers, the ridge tile terminal accessory is designed to make the roof finish look neater and less obtrusive. Available in a black enamel finish, the ridge tile terminal fits with specified ridge tiles from an approved manufacturer. Please contact Glow-worm for further information.



Flueing horizontal

OPTIONS & ACCESSORIES

Flue options : top rear



Horizontal Flue Options: Top Rear

L = Flue length, measured from outside wall face to centre line of flue outlet.

If **L** is less than 584mm then only the horizontal flue is required.

If **L** is greater than 584mm then extensions are required.

If **L** is less than 379mm then use horizontal top flue A2043400, which can be cut to suit a minimum wall thickness of 75mm.

X = wall thickness.

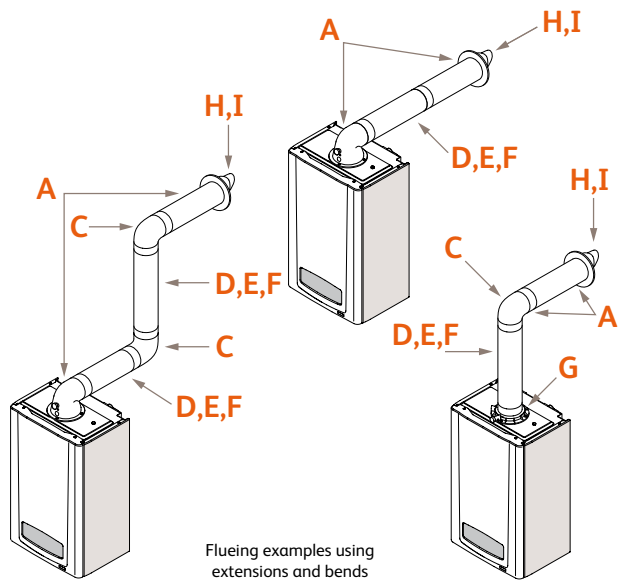
Z = distance from centre line of flue outlet to inside wall face.

The horizontal flue can be extended by up to 10m.

The maximum flue length with extensions must not be exceeded (refer to **L** in table below).

For each additional 90° or 2 x 45° bends fitted, the maximum flue length must be reduced by 1m.

The vertical flue adaptor **G** is required for vertical flue connections to the boiler.

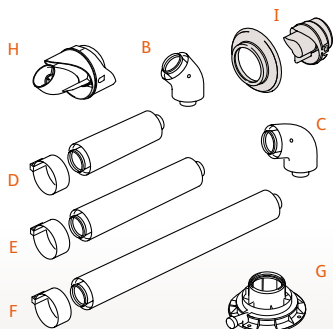


Flue options : top rear

A	Model	L Max. with Ext. (m)	X (mm)		Z (mm)	A Horizontal Telescopic flue
			Min	Max		
	24 cxi 24cx 30cxi 30cx 38cxi	10	203	408	176	
	12hxi 15hxi 18hxi 24hxi 30hxi 38hxi	10	203	408	176	
	18sxi 30sxi	10	203	408	176	

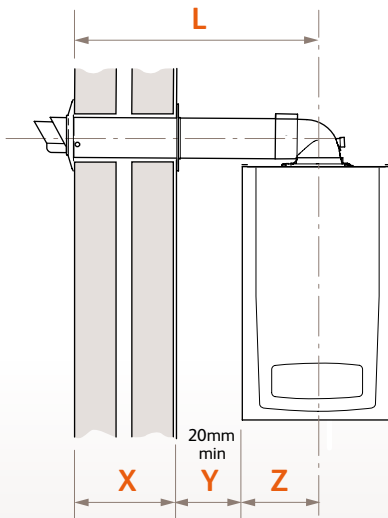
A2043600

Flue accessories : top rear



B	C	D	E
45° Bend 2000460485 (2 off)	90° Bend 2000460484 (1 off)	0.5m Extension 2000460481 (1 off)	1m Extension 2000460482 (1 off)
F	G	H	I
2m Extension 2000460483 (1 off)	Vertical Flue Adaptor A2024600	Deflector Terminal Black 0020060582 White 0020060583	Black Terminal A2043700

Flue options : top side



Horizontal Flue Options: Top Side

L = Flue length, measured from outside wall face to centre line of flue outlet. If **L** is less than 584mm then only the horizontal flue is required.
 If **L** is greater than 584mm then extensions are required.
 If **L** is less than 379mm then use horizontal top flue A2043400, which can be cut to suit a minimum wall thickness of 75mm.

X = wall thickness.

Y = distance from the side of the boiler to the inside wall face.

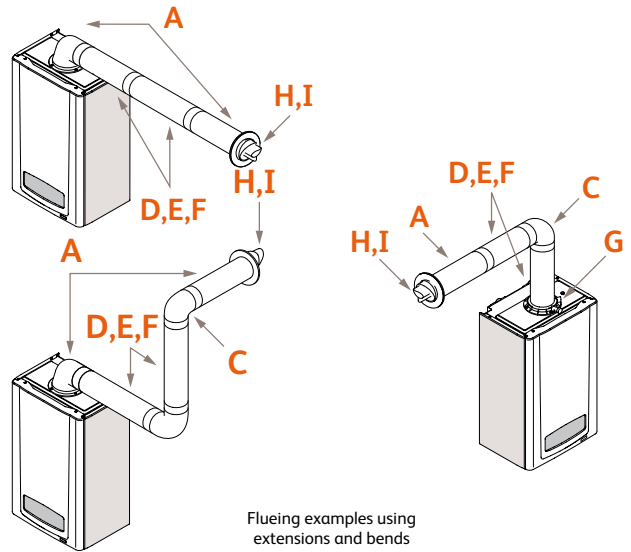
Z = distance from centre line of flue outlet to side of boiler.

The horizontal flue can be extended by up to 10m.

The maximum flue length with extensions must not be exceeded (refer to **L** in table below).

For each additional 90° or 2 x 45° bends fitted, the maximum flue length must be reduced by 1m.

The vertical flue adaptor **G** is required for vertical flue connections to the boiler.



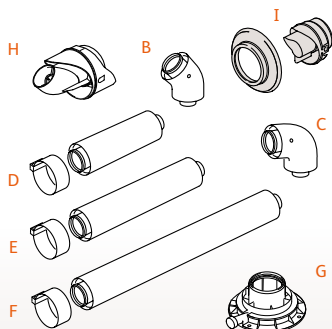
Flueing examples using extensions and bends

Flue options : top side

A	Model	L Max. with Ext. (m)	X (mm)		Z (mm)	A	A Horizontal Telescopic flue
			Min	Max			
	24cxi 24cx 30cxi 30cx 38cxi	10	119	324	240	left	
	12hxi 15hxi 18hxi 24hxi 30hxi 38hxi	10	149	354	210	right	
	18sxi 30sxi	10	119	324	240	left	
			149	354	210	right	

A2043600

Flue accessories : top side

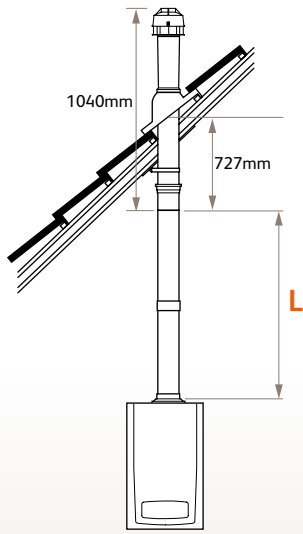


B	C	D	E
45° Bend 2000460485 (2 off)	90° Bend 2000460484 (1 off)	0.5m Extension 2000460481 (1 off)	1m Extension 2000460482 (1 off)
F	G	H	I
2m Extension 2000460483 (1 off)	Vertical Flue Adaptor A2024600	Deflector Terminal Black 0020060582 White 0020060583	Black Terminal A2043700

Flueing vertical

OPTIONS & ACCESSORIES

Flue options : vertical



Vertical Flue Options

L = Flue length, measured from the top of the boiler up to the flue terminal.

Maximum flue length is 10m plus vertical roof terminal.

The maximum flue length must not be exceeded (refer to **L** in table below).

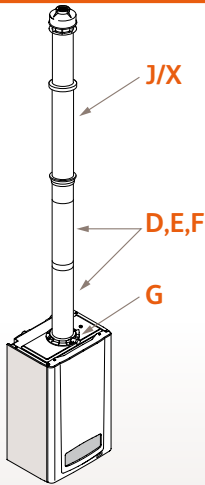
For each 90° or 2 x 45° bends fitted the maximum flue length must be reduced by 1m.

Vertical flue options use the same 100mm diameter flue components as the horizontal flue options.

The vertical flue adaptor **G** is required for vertical flue connections to the boiler.

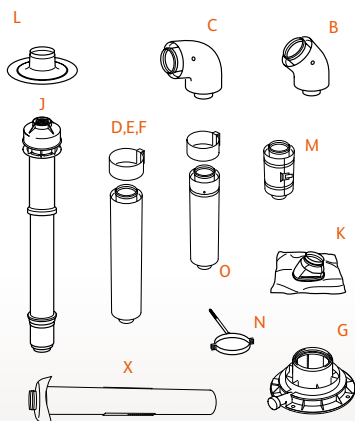
Horizontal sections must have a continuous fall of at least 2.5° (44mm/metre) back to the boiler.

Flue options : vertical



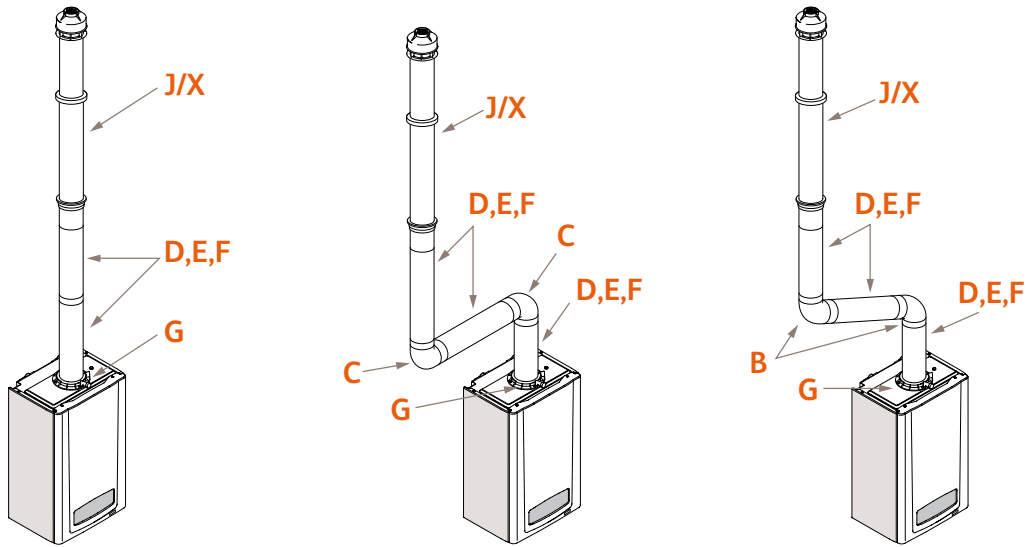
Model	L Max. with Ext. (m)	Description of Parts	Part Number
All Models	10	D 0.5m Extension (1 off) or	2000460481
All Models	10	E 1m Extension (1 off) or	2000460482
All Models	10	F 2m Extension (1 off)	2000460483
All Models	10	G Vertical Flue Adaptor	A2024600
All Models	10	J Vertical Roof Terminal	2000460480

Flue accessories : vertical



B	C	D	E	F
45° Bend 2000460485 (2 off)	90° Bend 2000460484	0.5m Extension 2000460481 (1 off)	1m Extension 2000460482 (1 off)	2m Extension 2000460483 (1 off)
G	J	K	L	M
Vertical Flue Adaptor A2024600	Vertical Roof Terminal 2000460480	Pitched Roof Flashing 2000460479	Flat Roof Flashing 2000460478	Sliding Sleeve 2000460487
N	O	X		
Fixing Bracket 2000460486 (5 off)	Telescopic Extension A2036900	Ridge Tile Terminal A2043800		

Flueing examples using extensions and bends



Plume Management Kit

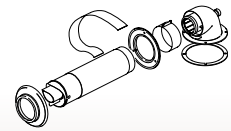
The Plume Management Kit fits onto the horizontal flue and allows the flue outlet to be raised by up to 6m. This ensures that the flue gases are vented at a higher level.

The maximum permitted flue length (P) is measured from the centre line of the flue terminal to the top of the outlet terminal. Maximum flue length (P) must not exceed 6m and be added to the total flue length calculation.

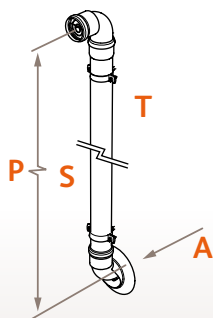
For each additional 90° or 2 x 45° bends fitted, the maximum length must be reduced by 1m.

Telescopic flue

Horizontal Telescopic Flue
A2043600

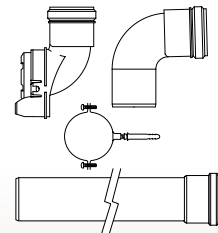


Plume management kit

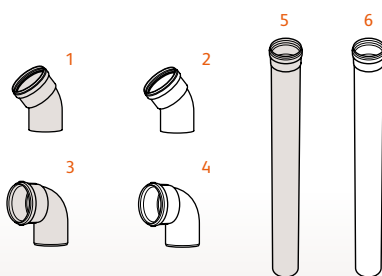


Model	P (mm)	
	Min	Max
All Models	500mm	6000mm
Black: A2044000 / White A2044100		

T Plume Management Kit



Accessories

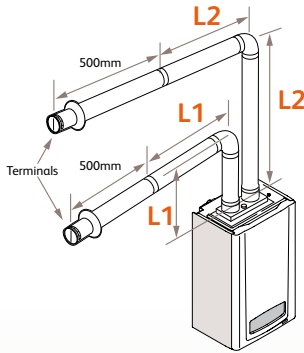


1	2	3
45° Bend Black A2044400 (2 off)	45° Bend White A2044500 (2 off)	90° Bend Black A2044600
4	5	6
90° Bend White A2044700	1m Extension Black A2044200	1m Extension White A2044300

Flueing twin

OPTIONS & ACCESSORIES

Flue options : twin



Twin Flue Options

L = L1+ L2 Maximum available combined flue length (**L1** air inlet and **L2** flue outlet), measured from top of boiler (not including terminals).

Maximum flue length is 40m (**L1+ L2**) plus terminals.

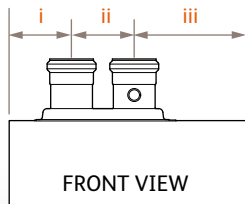
For each 90° or 2 x 45° bends fitted the maximum flue length must be reduced by 1m.

Air inlet and flue outlet terminals must be installed so that they are exposed to external air.

The flue outlet must be above the air inlet if mounted vertically. Horizontal sections must have a continuous fall of at least 2.5° (44mm/metre) back to the boiler.

The minimum distance between flue and air terminals is 300mm (between terminal centres).

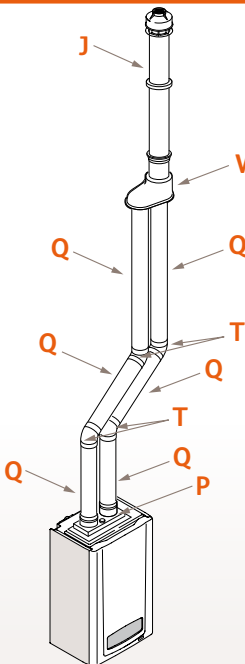
Twin flue adaptor



P Twin Flue adaptor A2011000

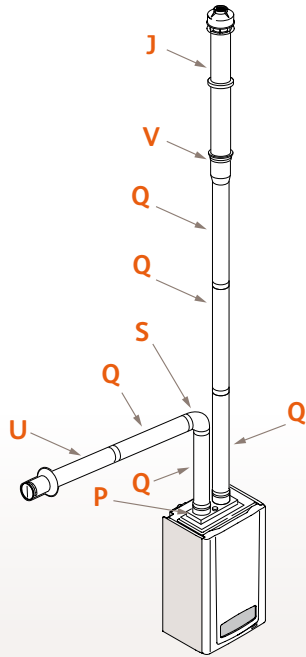
Model	i (mm)	ii (mm)	iii (mm)
cx range cx range	120	120	210
hxi range	120	120	135
sxi range	120	120	210

Twin flue option 1



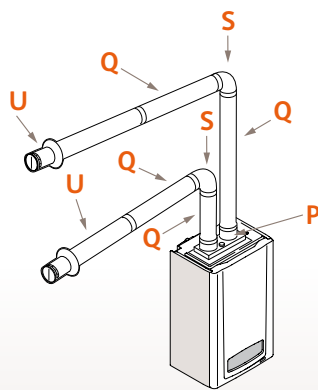
Model	L = L1 air + L2 flue (m) Max Combined Flue Length	Description of Parts	Part Number
All Models	40	J Vertical Roof Terminal	2000460480
All Models	40	P Twin Flue Adaptor	A2011000
All Models	40	Q 1m Extension (1 off)	A2011100
All Models	40	T 45° Bend (2 off)	A2011300
All Models	40	W Twin Pipe to Concentric Adaptor	A2011600

Twin flue option 2



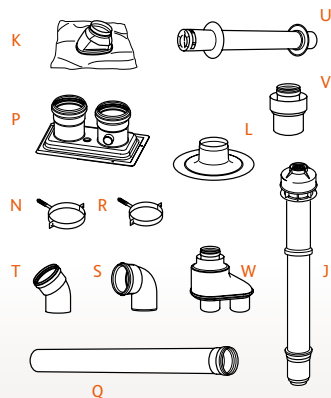
Model	L = L1 air + L2 flue (m) Max Combined Flue Length	Description of Parts	Part Number
All Models	40	J Vertical Roof Terminal	2000460480
All Models	40	P Twin Flue Adaptor	A2011000
All Models	40	Q 1m Extension (1 off)	A2011100
All Models	40	S 90° Bend (1 off)	A2011400
All Models	40	U Horizontal Terminal	A2011200
All Models	40	V Single Pipe Adaptor	A2011500

Twin flue option 3



Model	L = L1 air + L2 flue (m) Max Combined Flue Length	Description of Parts	Part Number
All Models	40	P Twin Flue Adaptor	A2011000
All Models	40	Q 1m Extension (1 off)	A2011100
All Models	40	S 90° Bend (1 off)	A2011400
All Models	40	U Horizontal Terminal	A2011200

Twin flue accessories



J	K	L	N	P	Q
Vertical Roof Terminal 2000460480	Pitched Roof Flashing 2000460479	Flat Roof Flashing 2000460478	Ø 100mm Fixing Bracket 2000460486 (5 off)	Twin Flue Adaptor A2011000	1m Extension A2011100
R	S	T	U	V	W
Ø 80mm Fixing Bracket A2012800 (5 off)	90° Bend A2011400	45° Bend A2011300 (2 off)	Horizontal Terminal A2011200	Single Pipe Adaptor A2011500	Twin Pipe to Concentric Adaptor A2011600

Controls options

COMPATIBILITY MATRIX

Control options : cxi	Ultracom cxi		Climastat		Climapro / Climapro RF		Outdoor Sensor
To achieve room compensation you will need:							
• Using inbuilt programmer	✓	+	✓		x		x
or							
• Using external controls	✓	+	x		✓		x
To achieve weather compensation you will need:							
• Using inbuilt programmer	✓	+	✓	+	x		✓
or							
• Using external controls	✓	+	x		✓	+	✓
To achieve basic on/off control you will need:							
• Using inbuilt programmer	✓	+	✓		x		x
or							
• Using external controls	✓	+	x		✓		x

Control options : cx	Ultracom cx		Climastat		Climapro / Climapro RF		Analogue Timer		Outdoor Sensor
To achieve room compensation you will need:									
• Using external controls	✓	+	x		✓		x		x
To achieve weather compensation you will need:									
• Using external controls	✓	+	x		✓	+	x		✓
or									
• Using analogue timer	✓	+	✓	+	x		✓	+	✓
To achieve basic on/off control you will need:									
• Using external controls	✓	+	x		✓		x		x
or									
• Using analogue timer	✓	+	✓	+	x		✓		x

Control options : hxi/sxi	Ultracom hxi & sxi		Climastat		Climapro / Climapro RF		Smart Wiring Centre		Options board		Outdoor Sensor
To achieve room compensation you will need:											
• Using inbuilt programmer	✓	+	✓	+	x		✓		x		x
or											
• Using external controls	✓	+	x		✓	+	✓		x		x
To achieve weather compensation you will need:											
• Using inbuilt programmer	✓	+	✓	+	x		✓	+	x		✓
or											
• Using external controls	✓	+	x		✓	+	✓	+	x		✓
To achieve basic on/off control you will need:											
• Using inbuilt programmer	✓	+	✓	+	x		x		✓		x
or											
• Using external controls	✓	+	x		✓	+	x		✓		x

Note: Satisfies Part L requirements for time and temperature control when used in the above configurations

Specifications : cxi

Ultracom :	24cxi	30cxi	38cxi		
Size	Casing dimensions (h w d)(mm)	726 x 450 x 334	726 x 450 x 334	726 x 450 x 334	
	Weight (packed)	45kg	47kg	48kg	
	CH output (kW) Min/Max	5.0/18.0	5.0/22.9	6.6/30.0	
Performance	DHW output (kW) Min/Max	5.0/24.0	5.0/30.0	6.7/38.4	
	CH condensing Max output (kW)	20.0	24.7	32.2	
	DHW flow rate l/min. 35°C rise	9.8	12.3	15.5	
	DHW response*	5 seconds	5 seconds	5 seconds	
	SEDBUK rating	A	A	A	
	SEDBUK %	90.3	90.3	90.4	
	NOx class 5 (natural gas)	Yes	Yes	Yes	
	Adjustable to LPG	Yes	Yes	Yes	
	Construction	Main heat exchanger type	Coiled tube	Coiled tube	Coiled tube
		Heat exchanger material	Stainless steel	Stainless steel	Stainless steel
Burner type		Pre-mixed	Pre-mixed	Pre-mixed	
Fully modulating		Yes	Yes	Yes	
DHW plate heat exchanger		Yes	Yes	Yes	
Installation	Integrated hydrobloc	Yes	Yes	Yes	
	Suitable for sealed systems	Yes	Yes	Yes	
	Suitable for open-vent systems	No	No	No	
	Filling loop	Integral	Integral	Integral	
	Flow restrictor	Yes 8 l/min	Yes 12 l/min	Yes 16 l/min	
	Inbuilt system bypass	Yes	Yes	Yes	
	Inbuilt condensate trap/siphon	Yes	Yes	Yes	
	Inbuilt boiler frost protection	Two stage	Two stage	Two stage	
	'Continua' electronics	Yes	Yes	Yes	
	Zero compartment ventilation	Yes	Yes	Yes	
Clearances	Top (mm) (from top of boiler)	150	150	150	
	Side (mm)	20	20	20	
	Bottom (mm)	200	200	200	
	Front (mm)**	600	600	600	
User Interface	User display	Digital	Digital	Digital	
	Diagnostics	Advanced	Advanced	Advanced	
	User adjustable CH temp control	Yes	Yes	Yes	
	User adjustable DHW temp control	Yes	Yes	Yes	
	'Eco' setting on DHW	Yes	Yes	Yes	
	Inbuilt Programmer	Yes	Yes	Yes	
Pipes	Prefixing jig with DIN layout	Optional	Optional	Optional	
	Optional rear piping kit	Yes	Yes	Yes	
	Water connections	2 x 22mm 2 x 15mm	2 x 22mm 2 x 15mm	2 x 22mm 2 x 15mm	
Flues	Max horizontal	10m	10m	10m	
	Max vertical	10m	10m	10m	
	Max twin flue (total air + flue)	40m	40m	40m	
	Optional Plume Management Kit	Yes	Yes	Yes	

Specifications : cx

Ultracom :	24cx	30cx		
Size	Casing dimensions (h w d)(mm)	726 x 450 x 334	726 x 450 x 334	
	Weight (packed)	45kg	47kg	
	CH output (kW) Min/Max	5.0/18.0	5.0/22.9	
Performance	DHW output (kW) Min/Max	5.0/24.0	5.0/30.0	
	CH condensing Max output (kW)	20.0	24.7	
	DHW flow rate l/min. 35°C rise	9.8	12.3	
	DHW response*	5 seconds	5 seconds	
	SEDBUK rating	A	A	
	SEDBUK %	90.3	90.3	
	NOx class 5 (natural gas)	Yes	Yes	
	Adjustable to LPG	Yes	Yes	
	Construction	Main heat exchanger type	Coiled tube	Coiled tube
		Heat exchanger material	Stainless steel	Stainless steel
Burner type		Pre-mixed	Pre-mixed	
Fully modulating		Yes	Yes	
DHW plate heat exchanger		Yes	Yes	
Installation	Integrated hydrobloc	Yes	Yes	
	Suitable for sealed systems	Yes	Yes	
	Suitable for open-vent systems	No	No	
	Filling loop	Integral	Integral	
	Flow restrictor	Yes 8 l/min	Yes 12 l/min	
	Inbuilt system bypass	Yes	Yes	
	Inbuilt condensate trap/siphon	Yes	Yes	
	Inbuilt boiler frost protection	Two stage	Two stage	
	'Continua' electronics	Yes	Yes	
	Zero compartment ventilation	Yes	Yes	
Clearances	Top (mm) (from top of boiler)	150	150	
	Side (mm)	20	20	
	Bottom (mm)	200	200	
	Front (mm)**	600	600	
User Interface	User display	LCD	LCD	
	Diagnostics	Advanced	Advanced	
	User adjustable CH temp control	Yes	Yes	
	User adjustable DHW temp control	Yes	Yes	
	'Eco' setting on DHW	Yes	Yes	
	Inbuilt Programmer***	No***	No***	
Pipes	Prefixing jig with DIN layout	Optional	Optional	
	Optional upward piping kit	Yes	Yes	
	Water connections	2 x 22mm 2 x 15mm	2 x 22mm 2 x 15mm	
Flues	Max horizontal	10m	10m	
	Max vertical	10m	10m	
	Max twin flue (total air + flue)	40m	40m	
	Optional Plume Management Kit	Yes	Yes	

* 1 metre from the tap ** This can be reduced to 5mm for removable panel

* 1 metre from the tap ** This can be reduced to 5mm for removable panel
*** Analogue timer available as an accessory

Specifications : hxi

Ultracom :	12hxi	15hxi	18hxi	24hxi	30hxi	38hxi	
Size	Casing dimensions (h w d)(mm)	610 x 375 x 334	610 x 375 x 334	610 x 375 x 334	610 x 375 x 334	610 x 375 x 334	610 x 375 x 334
	Weight (packed)	28kg	28kg	28kg	31kg	31kg	31kg
Performance	CH output (kW) Min/Max	5.0/12.0	5.0/15.0	5.0/18.6	5.3/24.0	5.3/28.2	6.3/38.0
	CH condensing Max output (kW)	12.9	16.2	20.0	25.0	30.6	41.0
	SEDBUK rating	A	A	A	A	A	A
	SEDBUK %	90.5	90.5	90.4	90.5	90.6	90.8
	NOx class 5 (natural gas)	Yes	Yes	Yes	Yes	Yes	Yes
	Adjustable to LPG	Yes	Yes	Yes	Yes	Yes	Yes
Construction	Main heat exchanger type	Coiled tube	Coiled tube	Coiled tube	Coiled tube	Coiled tube	Coiled tube
	Heat exchanger material	Stainless steel	Stainless steel	Stainless steel	Stainless steel	Stainless steel	Stainless steel
	Burner type	Pre-mixed	Pre-mixed	Pre-mixed	Pre-mixed	Pre-mixed	Pre-mixed
Installation	Fully modulating	Yes	Yes	Yes	Yes	Yes	Yes
	Suitable for sealed systems	Yes	Yes	Yes	Yes	Yes	Yes
	Suitable for open-vent systems	Yes	Yes	Yes	Yes	Yes	Yes
	Inbuilt condensate trap/siphon	Yes	Yes	Yes	Yes	Yes	Yes
	Inbuilt boiler frost protection	Two stage	Two stage	Two stage	Two stage	Two stage	Two stage
	'Continua' electronics	Yes	Yes	Yes	Yes	Yes	Yes
	Zero compartment ventilation	Yes	Yes	Yes	Yes	Yes	Yes
Clearances	Top (mm) (from top of boiler)	150	150	150	150	150	150
	Side (mm)	20	20	20	20	20	20
	Bottom (mm)	200	200	200	200	200	200
	Front (mm)*	600	600	600	600	600	600
	User display	Digital	Digital	Digital	Digital	Digital	Digital
	Diagnostics	Advanced	Advanced	Advanced	Advanced	Advanced	Advanced
User Interface	User adjustable CH temp control	Yes	Yes	Yes	Yes	Yes	Yes
	Optional Programmer	Yes**	Yes**	Yes**	Yes**	Yes**	Yes**
	Pipes	Water connections	2 x 22mm	2 x 22mm	2 x 22mm	2 x 22mm	2 x 22mm
Flues	Max horizontal	10m	10m	10m	10m	10m	10m
	Max vertical	10m	10m	10m	10m	10m	10m
	Max twin flue (total air + flue)	40m	40m	40m	40m	40m	40m
	Optional Plume Management Kit	Yes	Yes	Yes	Yes	Yes	Yes

* This can be reduced to 5mm for removable panel ** Activated with addition of Smart Wiring Centre

Specifications : sxi

Ultracom :	18sxi	30sxi	18sxi	30sxi	
Size	Casing dimensions (h w d)(mm)	726 x 450 x 334	726 x 450 x 334		
	Weight (packed)	42kg	45kg		
Performance	CH output (kW) Min/Max	5.0/18.6	5.0/28.2		
	CH condensing Max output (kW)	20.0	30.6		
	SEDBUK rating	A	A		
	SEDBUK %	90.4	90.6		
	NOx class 5 (natural gas)	Yes	Yes		
	Adjustable to LPG	Yes	Yes		
Construction	Main heat exchanger type	Coiled tube	Coiled tube		
	Heat exchanger material	Stainless steel	Stainless steel		
	Burner type	Pre-mixed	Pre-mixed		
Installation	Fully modulating	Yes	Yes		
	Integrated hydrobloc	Yes	Yes		
	Suitable for sealed systems	Yes	Yes		
	Suitable for open-vent systems	No	No		
	Inbuilt system bypass	Yes	Yes		
	Inbuilt condensate trap/siphon	Yes	Yes		
	Inbuilt boiler frost protection	Two stage	Two stage		
Clearances	'Continua' electronics	Yes	Yes		
	Zero compartment ventilation	Yes	Yes		
	User Interface	Top (mm) (from top of boiler)	150	150	
		Side (mm)	20	20	
		Bottom (mm)	200	200	
	Pipes	Front (mm)*	600	600	
User display		Digital	Digital		
Diagnostics		Advanced	Advanced		
Flues	User adjustable CH temp control	Yes	Yes		
	Optional Programmer	Yes**	Yes**		
	Prefixing jig with DIN layout	Optional	Optional		
	Optional upward piping	Yes	Yes		
Water connections	Water connections	2 x 22mm	2 x 22mm		
	Max horizontal	10m	10m		
	Max vertical	10m	10m		
	Max twin flue (total air + flue)	40m	40m		
Optional Plume Management Kit	Yes	Yes			

* This can be reduced to 5mm for removable panel ** Activated with addition of Smart Wiring Centre

Cylinders : single coil

Cylinder sizes : 115 | 150 | 175 | 200 | 250 | 300

	115	150	175	200	250	300
Standard capacity litres	115	150	175	200	250	300
Maximum water supply pressure bar	10	10	10	10	10	10
Maximum primary circuit pressure bar	2.5	2.5	2.5	2.5	2.5	2.5
Pressure reducing valve bar	3.5	3.5	3.5	3.5	3.5	3.5
T/P valve °C/bar	95/7.0	95/7.0	95/7.0	95/7.0	95/7.0	95/7.0
Net weight (kg)	28	30	33	39	44	49
Weight (full) (kg)	145	175	205	245	310	340
Height (mm)	969	1179	1399	1499	1789	2109
Diameter (mm)	550	550	550	550	550	550

Cylinder Connections

Cold mains inlet	22mm compression
DHW outlet	22mm compression
Balanced pressure cold water outlet	22mm compression
Primary flow	22mm compression (on 2 port valve)
Primary return	22mm compression
Electrical connections	230/240V,50Hz

Coil Specifications

	115	150	175	200	250	300
Reheat time min	18	20	18.5	24	28	42
Heat up time min	20	21	24	26	30	35
kW Coil rating	19.3	19.3	22	22	26	26
Heat loss kWh/24hrs	1.7	1.9	2.0	2.1	2.3	2.5

Cylinders : twin coil

Cylinder sizes : 200 | 250 | 300

Dimensions & Weights

	200	250	300
Diameter (mm)	550	550	550
Height*	1499	1789	2109
Length of the immersion heater (mm)	430	430	430
Weight empty / full (kg)	39 / 245	44 / 310	49 / 340

Performance

	200	250	300
Capacity (l)	200	250	300
Reheat capacity (boiler) (%)	63	63	60
Heat up time (boiler) (mins)	21	26	30
Recovery time (boiler) (mins)	13	16	21
Heat loss (kWh/24hrs)	1.9	2.1	2.4

Safety

	200	250	300
Max mains inlet pressure (bar)	10	10	10
Pressure reducing valve setting (bar)	3.5	3.5	3.5
Expansion relief valve setting (bar)	6.0	6.0	6.0
T&P relief valve settings (°C / bar)	95 / 7.0	95 / 7.0	95 / 7.0

Connections

	200	250	300
Mains inlet / hot water outlet ** (mm)	22	22	22
Balanced cold water outlet** (mm)	22	22	22
Boiler flow / return** (mm)	22	22	22
Solar flow / return** (mm)	22	22	22
Thermostats & thermal cut outs [V (Hz)]	240V (50Hz)	240V (50Hz)	240V (50Hz)
Immersion heater & motorised valve [V (Hz)]	240V (50Hz)	240V (50Hz)	240V (50Hz)

* Excluding clearances for connecting fittings / pipework

** Compression fittings supplied

Market leading customer care

MARKET LEADING SALES SUPPORT FROM GLOW-WORM



Service Support

As a Glow-worm installer we will always support you and your customer with technical help and after sales support, online, over the phone and on the road, 7 days a week, 364 days a year, throughout the installation and life of the appliance.

All Glow-worm products are designed to exacting industry standards, are individually tested to ensure reliability and come with 2 years parts and labour free warranty as standard with extended warranty options available.

All our service engineers are Gas Safe registered and fully trained on all Glow-worm models past and present. There are 230 engineers based across the UK, each carrying over 1,500 different spare parts in their van enabling them to achieve an outstanding 97% first time fix rate. Alternatively, if you want standard technical information such as installation manuals and flueing information and don't want to spend time on the phone, visit our website at www.glow-worm.co.uk where

you will find comprehensive technical information, solutions to common installation and system problems and advice on energy saving.

Market leading spare part support

When you install a Glow-worm boiler, you can be confident that it has been manufactured to the highest of standards with tried and tested components. If in the unlikely event a problem occurs and a spare part is needed, then you can rest assured that Glow-worm's market leading spare parts division will have the item you require. Thanks to our commitment towards maintaining functional spare parts, availability is for up to 15 years after the range production ends. Glow-worm has a nationwide network of over 30 key spares stockists at approximately 450 locations around the UK which means getting hold of the part is as convenient as possible. If for any reason the item is not held by the stockist, then Glow-worm offers a next day delivery service for emergency orders.

Simply call the following numbers for the service you require:

Technical Advice: 01773 828300

After Sales Service: 01773 828100

Spare Parts: 01773 596188

The Glow-worm Service Centre lines are open: Monday to Friday 8:00am to 6:00pm, Saturday 9:00am to 4:00pm and Sunday 9:00am to 12:00pm.
Technical Support lines are open: Monday to Friday 8:30am to 5:30pm and Saturday 9:00am to 12:00pm

Our training courses

TRAINING CENTRES ACROSS THE UK

With so many changing regulations and new products, Glow-worm know how difficult it can be keeping up to date with all the information so that you can talk with knowledge and confidence to your customers and feel like you really understand the products you are working with. This is why Glow-worm provide hands-on training courses on all our product ranges and the latest regulations.

All training takes place at our specialist training centres around the country so you get expert training with minimum time taken off the job. Glow-worm training is delivered by fully qualified practitioners in a relaxed and informal environment supported by full reference materials and technical data sheets which you will take away with you and we won't let you go hungry as lunch and all refreshments are provided.

If it's training on domestic boilers you require then Glow-worm offer in-depth product training for both the Ultracom and the Flexicom ranges, along with Energy Efficiency for Domestic heating if you are just starting out.

If you are keen to turn your hand towards fitting renewable solutions, Glow-worm offers either a one-day Clearly Solar product training course if you are already solar accredited and want specific training on the Glow-worm range, or a two-day hands on Solar BPEC course which will give you a recognised solar accreditation upon completion.

If you are looking at attending a Solar BPEC course, then it's mandatory to complete a G3 unvented cylinder course first. This one-day course provides you with thorough understanding and a certified qualification to install and service unvented cylinders.

Training centres

Fife	●	Caerphilly	●
Glasgow	●	Bristol	●
Elland (Near Leeds)	●	Exeter	●
Belper (Near Derby)	●	Sittingbourne	●
Norwich	●		

● Boiler System Training Centres

● Boiler System & Clearly Solar Training Centres

Training courses

	Ultracom Product range	Flexicom Product range	Energy Efficiency for Domestic Heating
Duration	1 Day	1 Day	1 Day
Type of qualification	Manufacturer approved training	Manufacturer approved training	Certificate in Energy Efficiency for Domestic Heating
Course overview	Full training on the Glow-worm Ultracom range of high efficiency condensing boilers	Full training on the Glow-worm Flexicom range of high efficiency condensing boilers	Up-to-date information and training on technical system design, installation and regulations
Price	£35.25 per person inc vat	£35.25 per person inc vat	£141 per person inc vat

	Clearly Solar Product Training	Solar BPEC Course	G3 unvented cylinder training
Duration	1 Day	2 Days	1 Day
Course overview	A basic course giving insight into solar thermal theory, systems and products. What considerations you have to give to solar whether you are an installer, specifier or merchant.	2 day intensive, hands on course providing in-depth training on all domestic solar thermal systems including roof work. The course is certified through an examination at the end of the two days providing you with a recognised solar accreditation.	G3 is a mandatory qualification that you must hold when installing unvented cylinders (single or twin coil). Glow-worm provide a 1 day course, at the end you will be fully qualified to work with unvented cylinders. A G3 unvented qualification must be held before taking a BPEC course.
Price	£35.25 per person inc vat	£411.25 inc vat	£158.60 inc vat

For more information on Glow-worm training courses please contact:

Training: 01773 596156 | Email: training@glow-worm.co.uk | Web: www.glow-worm.co.uk

The information in this brochure was correct at the time of going to print. Glow-worm reserve the right to make any modifications to product specifications, or any other details, without prior notification. For further clarification, please enquire in writing to the head office address on the reverse of this brochure.

Head Office 01773 824639
Literature 01773 596105
After Sales Service 01773 828100
Technical Advice 01773 828300

Glow•worm

Nottingham Road, Belper, Derbys. DE56 1JT.

www.glow-worm.co.uk



INVESTOR IN PEOPLE

The Glow-worm
Ultracom hxi
was awarded
the Which? Best
Buy Award 2008

